

**Catenin gamma Antibody**  
**Rabbit mAb**  
**Catalog # AP91062****Specification**

---

**Catenin gamma Antibody - Product Information**

Application	WB, IHC, FC, ICC
Primary Accession	<a href="#">P14923</a>
Reactivity	Rat
Clonality	Monoclonal

**Other Names**

ARVD12; Catenin gamma; CTNNG; Desmoplakin III; Desmoplakin-3; DP3; DP111; gamma-catenin; Junction plakoglobin; JUP; PDGB; PKGB; PLAK;

Isotype	Rabbit IgG
Host	Rabbit
Calculated MW	81745 Da

**Catenin gamma Antibody - Additional Information**

Dilution	WB~~1:1000 IHC~~1:100~500 FC~~1:10~50 ICC~~N/A
Purification	Affinity-chromatography
Immunogen	A synthesized peptide derived from human Catenin gamma
Description	Desmoplakin 3 Common junctional plaque protein. The membrane- associated plaques are architectural elements in an important strategic position to influence the arrangement and function of both the cytoskeleton and the cells within the tissue. The presence of plakoglobin in both the desmosomes and in the intermediate junctions suggests that it plays a central role in the structure and function of submembranous plaques.
Storage Condition and Buffer	Rabbit IgG in phosphate buffered saline , pH 7.4, 150mM NaCl, 0.02% sodium azide and 50% glycerol. Store at +4°C short term. Store at -20°C long term. Avoid freeze / thaw cycle.

**Catenin gamma Antibody - Protein Information**

**Name** JUP ([HGNC:6207](#))

**Function**

Common junctional plaque protein. The membrane-associated plaques are architectural elements in an important strategic position to influence the arrangement and function of both the cytoskeleton and the cells within the tissue. The presence of plakoglobin in both the desmosomes and in the intermediate junctions suggests that it plays a central role in the structure and function of submembranous plaques. Acts as a substrate for VE-PTP and is required by it to stimulate VE-cadherin function in endothelial cells. Can replace beta-catenin in E-cadherin/catenin adhesion complexes which are proposed to couple cadherins to the actin cytoskeleton (By similarity).

#### Cellular Location

Cell junction, adherens junction. Cell junction, desmosome. Cytoplasm, cytoskeleton. Cell membrane; Peripheral membrane protein. Cytoplasm {ECO:0000250|UniProtKB:Q9PVF7}. Cell junction {ECO:0000250|UniProtKB:Q9PVF7}. Nucleus {ECO:0000250|UniProtKB:Q9PVF7} Note=Cytoplasmic in a soluble and membrane-associated form. Colocalizes with DSG4 at desmosomes (PubMed:21495994)

#### Tissue Location

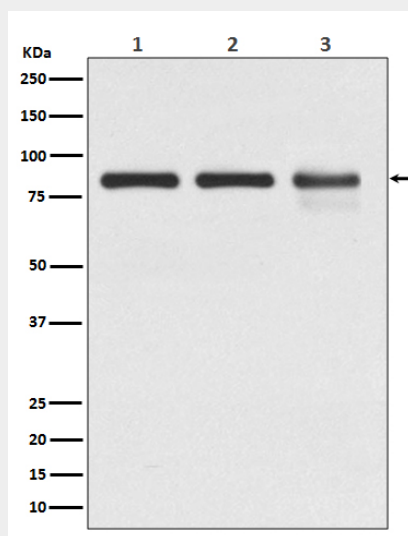
Expressed in the heart (at protein level).

#### Catenin gamma Antibody - Protocols

Provided below are standard protocols that you may find useful for product applications.

- [Western Blot](#)
- [Blocking Peptides](#)
- [Dot Blot](#)
- [Immunohistochemistry](#)
- [Immunofluorescence](#)
- [Immunoprecipitation](#)
- [Flow Cytometry](#)
- [Cell Culture](#)

#### Catenin gamma Antibody - Images



Western blot analysis of Catenin gamma expression in (1) A431 cell lysate; (2) NIH 3T3 cell lysate; (3) C6 cell lysate.